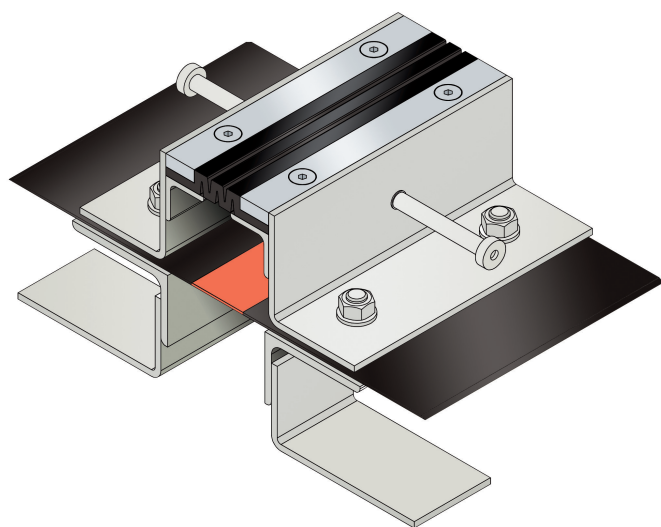




BBF124/.. WD

- high load-bearing capacity
- for insulated constructions
- sealing insert approved by the building authorities



FEATURES

watertight, resistant to heavy loads, trafficable by fork-lift trucks, expansion insert can be replaced at a possible damage without damaging the adjacent pavement, abrasion, weather and temperature resistant (-40°C bis +120°C), resistant to salt and waste-water (alcalics, microbes, bacteria)

APPLICATIONS

outdoor, multi-storey and underground park decks, ramp accesses, pedestrian bridges, all industrial applications

MATERIAL

hot-dip galvanised steel, (high-grade steel on request), synthetic rubber flexible insert (EPDM), joint tape (EPDM)

COVERING TYPES

asphalt, concrete, screed

TRAFFICABILITY

passenger car, trucks, fork-lifts

FORMED PARTS

upstand, membrane upstand, corner piece, T piece, cross piece, transition floor to wall

NOTES

Waterproof joint profile with loose and fixed flange according to DIN 18195.

Indication Profile height (h) from the lower edge of the loose flange
The joint tape is a product of BBF ElastoFug joint tape systems.

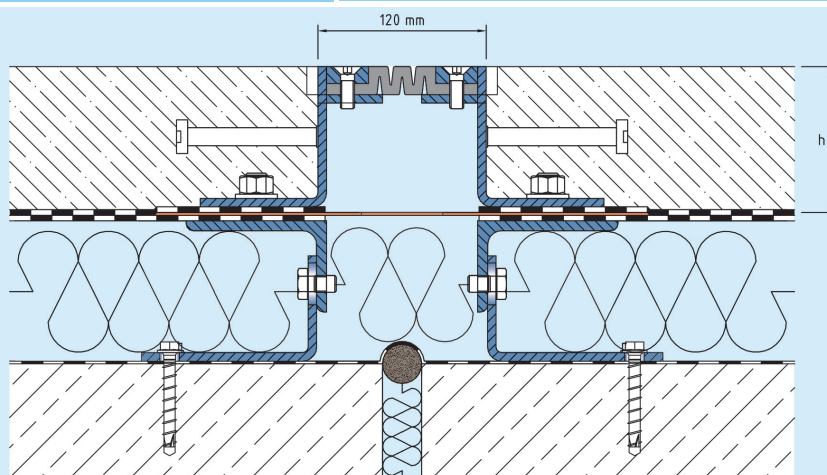
Our engineers and technicians can be of assistance during installation on request.

Technical data

Movement horizontal:	35 mm (-15/+20 mm)
Movement vertical:	20 mm (±10 mm)
Visible width:	120 mm
Maximal joint width:	80 mm
Load rating:	wheel load 5000 kg up to Ø 150 mm, B = 100 mm
Load rating trucks:	300 kN (DIN 1072)
Load rating forklifts:	70 kN (DIN 1055-3)
Supply length:	3 mtr
Color of flexible insert:	black

Designs

Article No.	Profile height (h)
BBF124/100 WD	100 mm
BBF124/120 WD	120 mm
BBF124/150 WD	150 mm
Special heights on request.	



BBF124

Subject to technical change without notice.