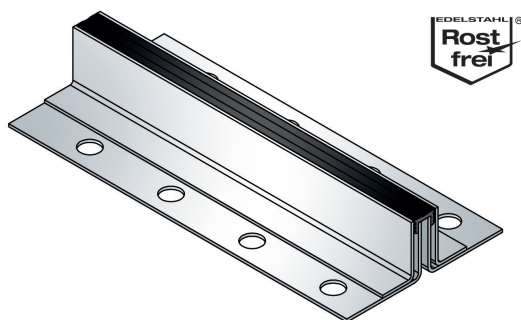




VA.3.20/..

- replaceable flexible insert
- narrow visible surface
- Non-PVC



FEATURES

expansion insert can be replaced anytime, abrasion, weather and temperature resistant (-40°C bis +120°C), resistant to salt and waste-water (alcalics, microbes, bacteria), punched bearing legs guarantee best connection to the subgrade/covering.

APPLICATIONS

shopping centres, railway stations, airports, exhibition halls, residential, office and administration buildings

MATERIAL

high-grade steel V2A, synthetic rubber flexible insert (EPDM)

COVERING TYPES

coating, screed, natural and stone slabs

FORMED PARTS

corner piece, T piece, cross piece

NOTES

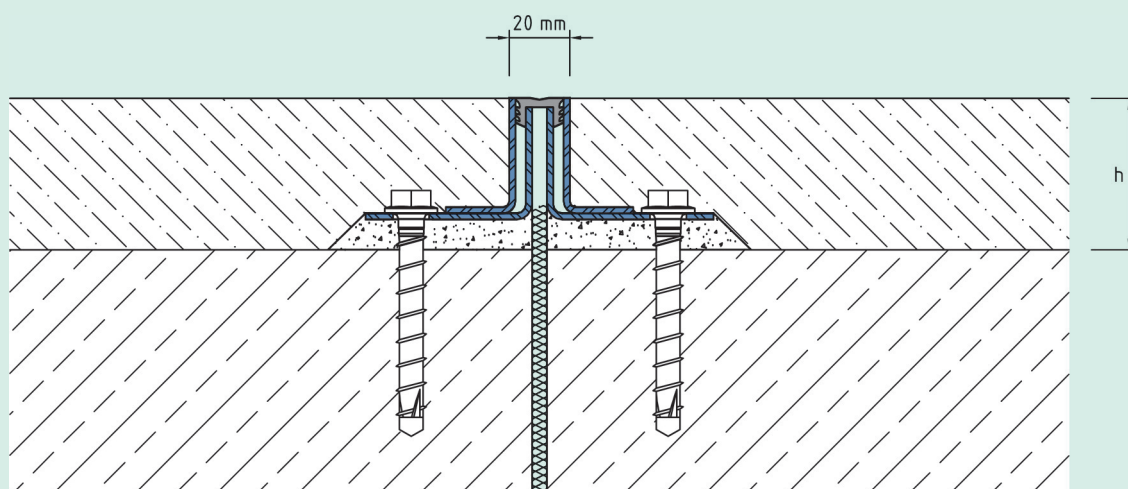
In case of mastic asphalt, please request a technical consultation.

Technical data

Movement horizontal:	4 mm (±2 mm)
Movement vertical:	2 mm (±1 mm)
Visible width:	20 mm
Maximal joint width:	15 mm
Load rating:	wheel load 700 kg up to Ø 150 mm, B = 100 mm
Supply length:	3 mtr
Color of flexible insert:	black or grey

Designs

Article No.	Profile height (h)	Recess(WxD)
VA.3.20/20	20 mm	160 x 30 mm
VA.3.20/30	30 mm	160 x 40 mm
VA.3.20/40	40 mm	160 x 50 mm
VA.3.20/50	50 mm	160 x 60 mm
VA.3.20/60	60 mm	160 x 70 mm
VA.3.20/80	80 mm	160 x 90 mm
Special heights on request.		



VA.3.20

Subject to technical change without notice.