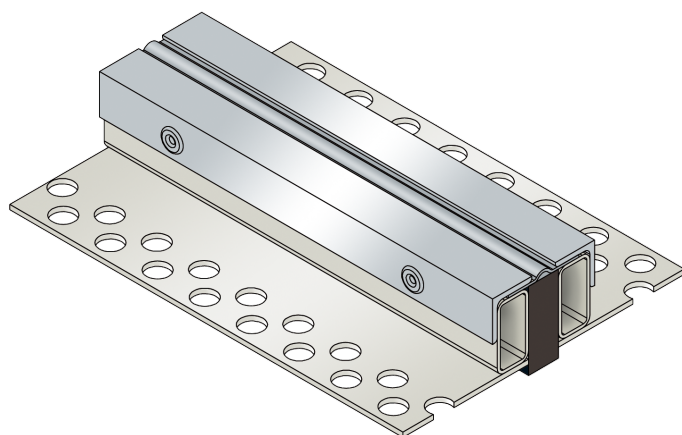




## VA.6.65/..

- for heavy loads
- suitable for all types of covering
- visible surface in stainless steel
- narrow visible surface



### FEATURES

resistant to heavy loads, trafficable by fork-lift trucks, perforated bearing legs guarantee the best connection to the substrate/covering

### APPLICATIONS

all industrial applications, exhibition halls

### MATERIAL

substructure hot-dip galvanised steel and visible surface stainless steel V2A, K/VA foam material in the central section

### COVERING TYPES

asphalt, coating, concrete, screed, industrial coverings, natural and stone slabs

### TRAFFICABILITY

industrial trucks (lifting trucks, fork-lifts etc.), passenger cars, trucks

### FORMED PARTS

corner piece, T-piece, cross piece

### NOTES

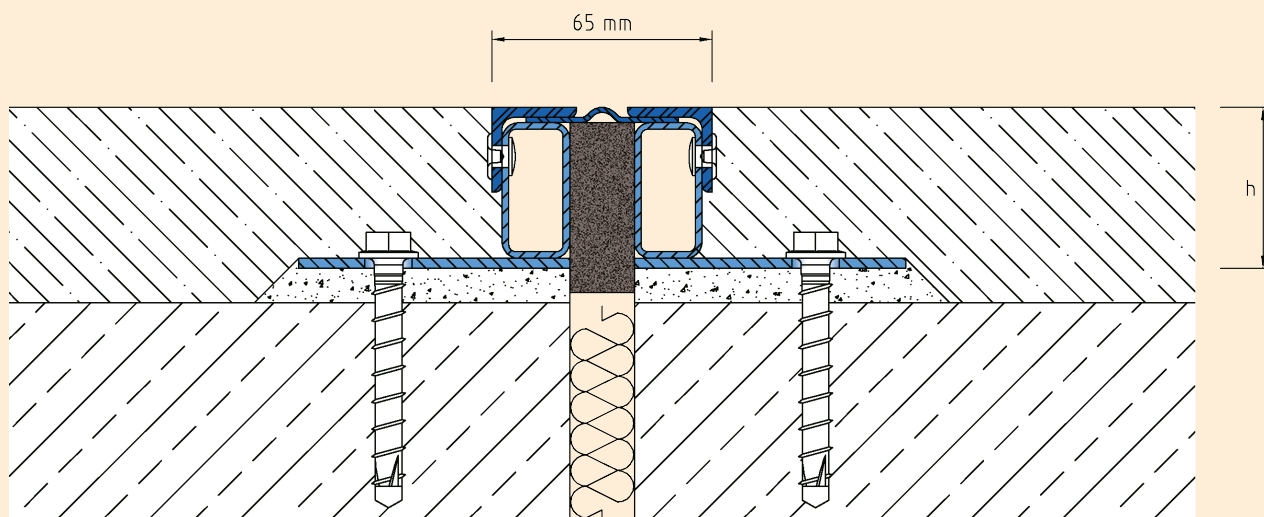
Depending on the floor covering, we recommend installing a grouting seal between the joint profile and the covering to prevent the hairline crack caused by the building physics.

### TECHNICAL DATA

Movement horizontal:	10 mm ( $\pm 5$ mm)
Movement vertical:	2 mm ( $\pm 1$ mm)
Visible width:	65 mm
Maximal joint width:	30 mm
Load rating:	wheel load 5000 kg up to $\varnothing$ 150 mm, B = 100 mm
Load rating trucks:	600 kN (DIN 1072)
Load rating forklifts:	150 kN (DIN 1055-3)
Supply length:	3 mtr

### DESIGNS

ARTICLE NO.	PROFILE HEIGHT (h)	RECESS (BxT)
VA.6.65/30	28 mm	230 x 38 mm
VA.6.65/40	38 mm	230 x 48 mm
VA.6.65/50	48 mm	230 x 58 mm
VA.6.65/70	68 mm	230 x 78 mm
VA.6.65/90	88 mm	230 x 98 mm
VA.6.65/110	108 mm	230 x 118 mm



VA.6.65

Subject to technical change without notice.